



MONTHLY MEMBERSHIP PROGRESS REPORT

Results as of: 4/30/2016

Multiple District 32

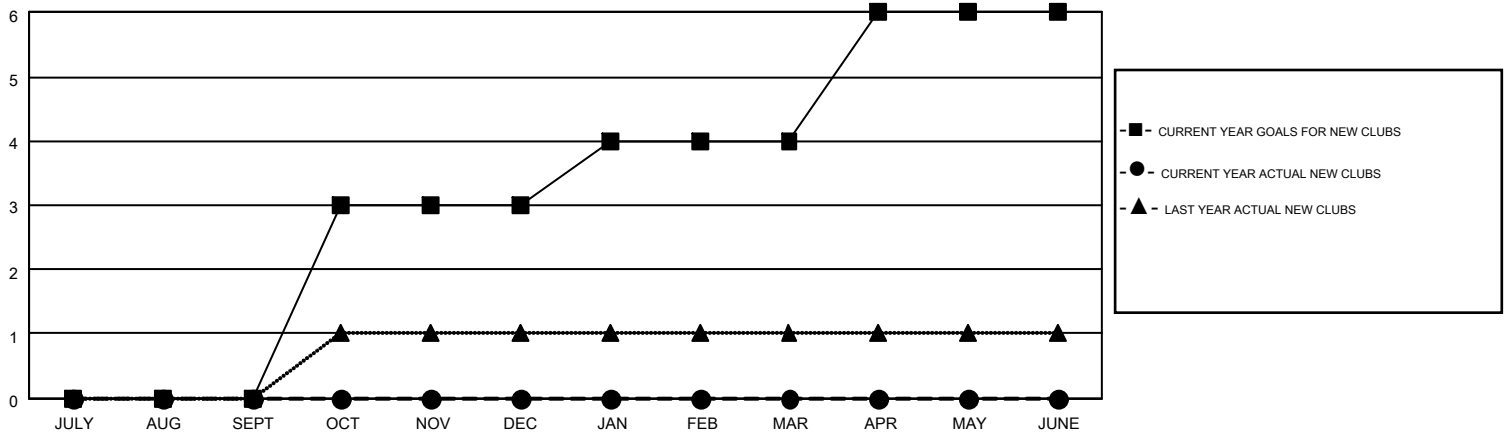
LOCATION: SOUTH CAROLINA

GMT: HARVEY WHITLEY

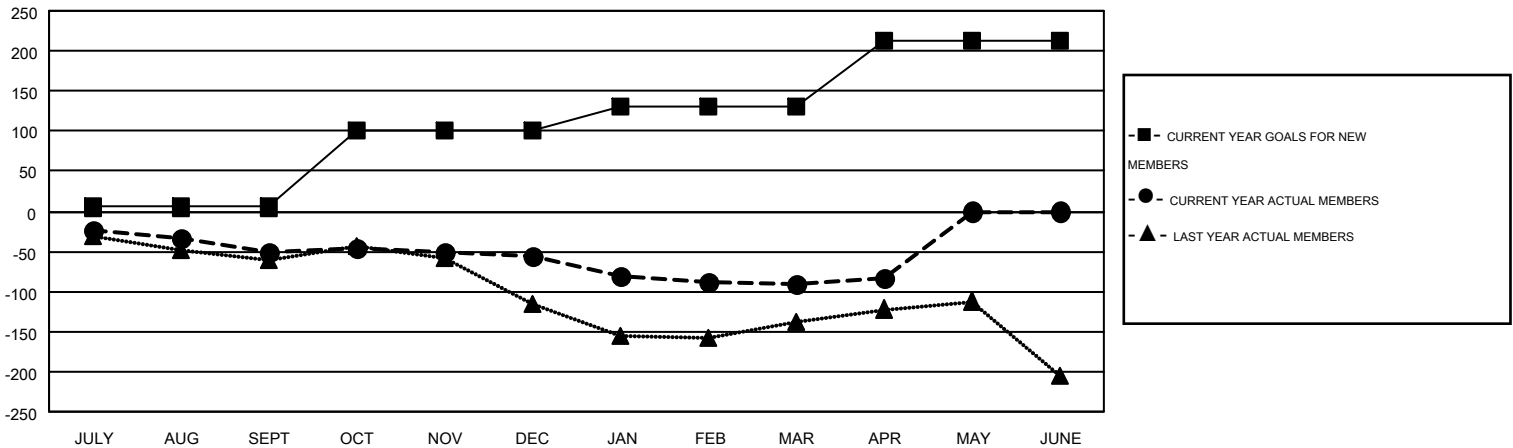
GMT CA 1

Clubs					Members				
RESULTS FOR 2015-2016					RESULTS FOR 2015-2016				
QUARTER	NEW CLUB GOAL	NEW CLUBS	DROPPED CLUBS	NET GAIN/LOSS	QUARTER	NEW MEMBER GOAL	CHARTER AND NEW MEMBERS ADDED	DROPPED MEMBERS	NET GAIN/LOSS
JULY/AUG/SEPT	0	0	0	0	JULY/AUG/SEPT	5	95	147	-52
OCT/NOV/DEC	3	0	1	-1	OCT/NOV/DEC	96	86	90	-4
JAN/FEB/MAR	1	0	2	-2	JAN/FEB/MAR	30	93	127	-34
APR/MAY/JUNE	2	0	0	0	APR/MAY/JUNE	82	26	20	6

GOALS AND ACTUAL NEW CLUBS CUMULATIVE



GOALS AND ACTUAL MEMBERS CUMULATIVE



DROPPED CLUBS: 3	84 CLUBS OF 143 ADDED 1 OR MORE NEW MEMBERS	<u>GENDER DISTRIBUTION</u>	
		MALE	2,622 (71.08%)
<u>DROPPED MEMBERS</u>		FEMALE	1,067 (28.92%)
DECEASED	46	<u>FAMILY UNIT MEMBERS</u> 733	
CLUB CANCELLED	11	<u>HEAD OF HOUSEHOLD</u> 360	
OTHER	324	<u>NON-HEAD OF HOUSEHOLD</u> 373	
TOTAL	381		

[CLICK HERE FOR HEALTH ASSESSMENT DATA](#)